

SATINIQUE



仙姬美髮護理系列



釋放秀髮能量

UNLEASH THE POWER OF HAIR

SATINIQUE™獨家專利ENERJUVE™智能修護複合成分 釋放秀髮能量

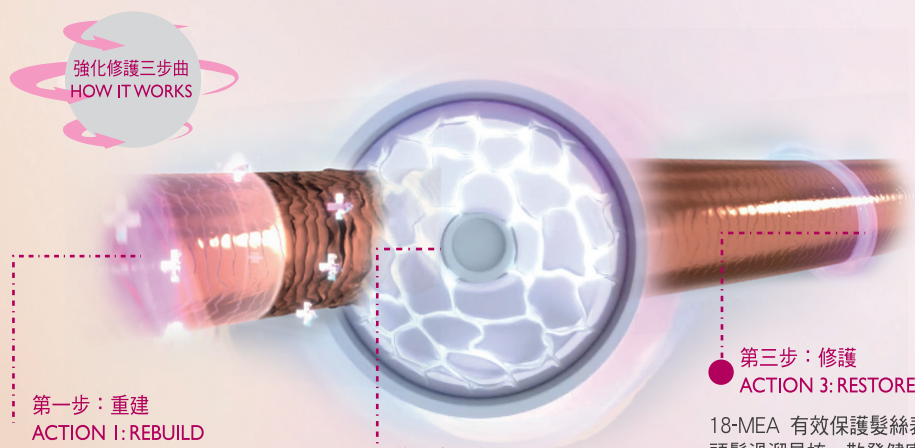
SATINIQUE™ ENERJUVE™ UNLEASH THE POWER OF HAIR

當頭髮受損害，負電荷會使頭髮彎曲、脆弱、更易折斷，令頭髮失去應有的光澤，乾澀暗啞。

SATINIQUE™獨家專利ENERJUVE™智能修護複合成分包括強化秀髮的脂質、鞏固髮質的肌酸及養護成分18-MEA，以帶健康正電荷的獨特成分融合天然植物精華與營養，重重深入受損髮絲，抵銷負電荷帶來的傷害，讓秀髮瞬間散發活力氣息。

When hair is damaged, it has a negative charge. It becomes frizzy, brittle and weak, causing it to look dry, dull and lifeless.

ENERJUVE™ is technologically formulated to charge hair with health and vitality. This exclusive, patented, positively charged complex of strengthening lipids, reinforcing creatine, and smoothing 18-MEA (18 Methyl Eicosanoic Acid) joins with botanicals and nutrients to counter the negative charge found in damaged hair, bringing back a positive, energized and healthy-looking state.



直接追蹤髮絲的受損部位，重點重建脆弱部分，令秀髮強韌健康。

Surrounds the hair and selectively binds to damaged areas to help rebuild weak spots. Hair looks and feels instantly stronger.

以脂質和肌酸滲透髮芯深處，從內而外修復髮質，注入新能量，令頭髮強韌有彈力。

Lipids and creatine penetrate through hair's core to help repair and revitalize from the inside out. Strength and elasticity are improved.

18-MEA 有效保護髮絲表層，令頭髮滑溜易梳，散發健康光澤。

18-MEA binds to hair's outer layer to help protect, restore and smooth the surface. Hair becomes shiny and healthy.

效果顯著

THE DRAMATIC RESULTS

使用前後對比 Before vs After

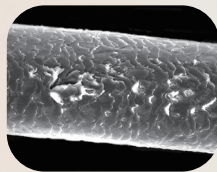
修復角質層 RESTORING THE CUTICLE

使用前

頻繁染燙令髮質受損，角質層受破壞並逐漸剝落，令頭髮乾燥，容易折斷。

BEFORE

Hair is damaged by heat and chemicals. The cuticle is lifted. Hair is brittle and weak.



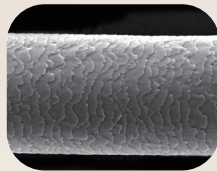
使用前 Before

使用後

角質層經修復後回復昔日平滑，髮質更健康、更富光澤。

AFTER

The cuticle is smooth. Hair is stronger.



使用後 After

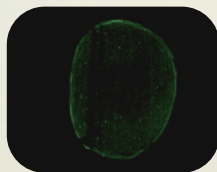
滲透髮芯 FORTIFYING THE CORE

使用前

髮質受損令脂質含量下降，頭髮變得脆弱、失去光澤，圖中螢光部分暗淡不顯眼。

BEFORE

Damage reduces lipid content. Hair is weak. Fluorescence is barely visible.



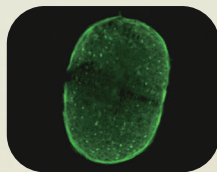
使用前 Before

使用後

ENERJUVE™智能修護複合成分滲透至頭髮皮質，提升脂質含量和頭髮韌度，令秀髮重現健康活力，綻現光采。

AFTER

ENERJUVE™ penetrates the hair cortex. Lipid content and strength increase. ENERJUVE™ leaves hair 'glowing' with a healthy look.



使用後 After

螢光顯影代表髮絲中的脂質含量。 The fluorescent area reflects lipid content in hair.

日常護理 CARE

護理秀髮的第一步，首先要徹底清潔污垢，然後適度滋潤髮質，提升秀髮水分，回復健康秀髮的天然光澤。SATINIQUE™全線洗髮乳及潤髮乳針對不同髮質及需要，助你締造健康秀髮。

SATINIQUE™嚴選天然植物精華和營養成分，配合ENERJUVE™智能修護複合成分，促進秀髮健康。各種成分如人參、胡桃果油及維他命原B5，均結合天然科學的精髓，令秀髮回復健康。

The first step is to cleanse to remove residue, and to condition to improve hydration for exceptional smoothness and shine. Our range of shampoos and conditioners are customized, so you can choose the right products for your hair concern.

ENERJUVE™ is joined by our signature blend of botanicals and nutrients carefully selected to help support specific hair needs. From energizing ginseng to rich macadamia nut oil to revitalizing pro-vitamin B5, experience the benefits of science and nature that elevates hair to its full potential.



水凝柔滑洗髮乳及潤髮乳 SMOOTH MOISTURE SHAMPOO & CONDITIONER

280毫升ml/750毫升ml

適合乾燥蓬鬆髮質

- 重現水潤亮澤
- 蘊含堅果籽油及維他命原B5天然植物配方，增加秀髮水分，回復彈性

For dry, unruly hair

- Restores vital moisture to hair
- Formula with a botanical blend of kukui seed oil and pro-vitamin B5 helps improve elasticity as it rehydrates and protects

潤澤修護洗髮乳及潤髮乳 GLOSSY REPAIR SHAMPOO & CONDITIONER

280毫升ml/750毫升ml

適合受損及經染燙髮質

- 經四五十次洗護後，染燙髮色依然亮澤如昔
- 蘊含石榴及葡萄籽萃取物，幫助乾旱髮質回復健康水潤

For damaged, color-treated hair

- Keeps color truer; longer for up to 45 washes
- Formula with a botanical blend of pomegranate and grape seed extracts helps revitalize dull, dry hair as it protects





豐盈質感洗髮乳及潤髮乳 EXTRA VOLUME SHAMPOO & CONDITIONER

280毫升ml/750毫升ml

適合幼細扁平髮質

- 增加秀髮豐盈感
- 令秀髮更有生氣，飄逸自然
- 蘊含大豆蛋白及胡桃果油，令頭髮加倍柔順亮澤，更健康強韌

For fine, flat hair

- Helps maximize and boost hair volume
- Adds fullness, body and life to flat hair
- Formula with a botanical blend of soy protein and macadamia nut oil adds softness and shine, improves texture and strength

防脫髮洗髮乳及潤髮乳 ANTI-HAIRFALL SHAMPOO & CONDITIONER

280毫升ml/750毫升ml

適合脆弱軟薄髮質

- 保護多達1,800條髮絲，形成更豐厚的效果
- 配合適當按摩，激活頭皮細胞，注入能量
- 蘊含人參及桑葉萃取物，令乾燥髮質回復生氣，同時支撐新生頭髮健康生長

For fragile, thinning hair

- Saves up to 1,800 strands for thicker, fuller-looking hair
- Helps energize and stimulate the scalp with massage
- Formula with a botanical blend of ginseng and mulberry leaf extract revitalizes dull, dry hair; protects and helps support the growth of new, healthy hair



去頭屑洗髮乳 ANTI-DANDRUFF SHAMPOO

280毫升ml/750毫升ml

適合乾燥及敏感頭皮

- 幫助減少頭皮屑
- 有助舒緩乾燥頭皮帶來的痕癢問題
- 蘊含牛油果及維他命E成分，為頭皮補充水分，提供足夠保護

For dry, irritated scalp

- Helps reduce dandruff
- Helps relieve dry, itchy scalp
- Formula with a botanical blend of avocado and vitamin E helps moisturize and protect

特效修護 TREAT

修護秀髮，是頭髮護理的第二步。SATINIQUE™特效修護產品修復每根受損髮絲，強化秀髮的防護層，免受環境及化學物品侵害。你可以根據你的髮質護理需要，選擇適合你的美髮修護產品。

The second step is to treat your hair. Our advanced treatments help deeply repair and restore each strand from past damage, as hair's defenses are strengthened to help protect from environmental and styling aggressors. You can select one or more treatments based on your hair needs.



頭皮護養精華 SCALP TONIC

80毫升ml

促進頭皮健康

- 滋養頭皮，幫助塑造更豐盈秀髮
- 專利頭皮賦活強化因子蘊含路易波斯綠茶、鋸棕櫚、紫蘇及甘草萃取物，有助激發毛囊生長，減低頭皮過敏

如何使用

- 1 取少量頭皮護養精華直接用於濕髮或乾髮上，輕輕按摩，用後毋須沖洗，可照常為秀髮造型。
- 2 性質溫和，可每天使用。如每天使用兩次，效果更佳。

For scalp health

- Helps promote fuller-looking hair and scalp nourishment
- The patented Scalp Revitalizing Complex with green rooibos, saw palmetto, shiso and licorice extracts help stimulate hair follicle thickening and reduce scalp irritation.

Product Usage

- 1 Apply a small amount directly to damp or dry scalp. Massage. Do not rinse out. Style as usual.
- 2 Gentle enough to use every day. Use twice daily for best results.

盈彩更新護髮膜 REVITALIZING MASK

240毫升ml

適合受損及經染燙髮質

修復頭髮角質層，讓秀髮強韌六倍

如何使用

- 1 於濕髮上均勻抹上盈彩更新護髮膜。
- 2 待三至五分鐘後徹底沖淨。
- 3 每星期使用 2 至 3 次。

For damaged, color-treated hair

Resurfaces and repairs hair's cuticle, strengthens hair up to 6 times

Product Usage

- 1 Apply and distribute through damp hair.
- 2 Leave on for 3-5 minutes. Rinse.
- 3 Use two to three times per week.



晚間修護精華 OVERNIGHT REPAIR TREATMENT

100毫升ml

修復受損髮尾

- 修復髮尾分叉，重整頭髮角質層
- 修護嚴重受損髮質，重現柔順亮澤

如何使用

- 1 於乾髮或濕髮的髮尾上塗抹少量晚間修護精華，毋須沖洗。
- 2 配方輕盈、不油膩，不殘留於枕頭上；適合經染燙髮質使用。
- 3 性質溫和，可每天使用。

For split end repair

- Helps mend split ends and resurfaces the cuticle
- Helps repair severely damaged hair for long-lasting softness and smoothness

Product Usage

- 1 Apply a small amount to damp or dry hair, focusing on ends. Leave in.
- 2 Non-greasy, lightweight formula. Does not leave residue on pillow. Safe for color treated hair.
- 3 Gentle enough for daily use.

完美造型 STYLE

第三步是為秀髮造型。SATINIQUE™美髮護理產品的造型系列助你輕鬆固定髮型，塑造獨特個性，時刻散發閃耀動人魅力。

The third step is styling. Create or maintain any look with our products designed to SHAPE, HOLD and SHINE. Enhance your own natural style or change it effortlessly.



啞色造型髮蠟

TEXTURING MATTE WAX

50克g

適合中度定型及造型

- 此造型髮蠟不油膩、不黏手
- 令造型持久不易扁塌，呈現中度造型效果
- 輕鬆塑造自然造型

如何使用

- 1 取適量髮蠟於掌心並於乾髮上造型；
可重複塗抹以達至豐盈效果。
- 2 性質溫和，可每天使用。

For medium hold and definition

- This wax is non-sticky, non-greasy
- Creates texture and definition for a look that lasts all day
- Allows easy shaping with a natural-looking finish

Product Usage

- 1 Rub desired amount on hands and work through dry hair. Reapply for a more texturized effect.
- 2 Gentle enough to use every day.



造型噴霧

FINAL STEP FINISHING SPRAY

215克g

適合中度定型

- 定型效果持久顯著
- 24 小時抵禦空氣水分，快速修整翹髮，有效維持髮型造型

如何使用

- 1 於造型後使用。
- 2 於距離乾髮 8 至 12 吋的位置噴上造型噴霧。
- 3 性質溫和，每天可使用多次。

For medium hold

- Finishes and sets style for a long-lasting hold
- Provides 24-hour humidity resistance, maximum control and frizz control

Product Usage

- 1 Use after styling.
- 2 Spray 8-12 inches from dry hair to finish your style.
- 3 Gentle enough to use multiple times a day.



SATINIQUE



© 2020 版權所有 美國安利（香港）日用品有限公司。
© 2020 Copyright Amway Hong Kong Limited. All rights reserved.
安利諮詢熱線 Amway Service Hotline: 2969 6300
網址 Website: www.amway.com.hk



260702 (15/12)